




CREATIVE
EDITION

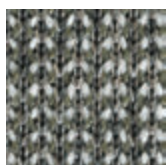
profim



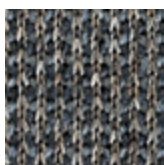
CREATIVE EDITION

Creative Edition ist eine Anwendung, die wir im Einklang mit den neuesten Trends entwickelt haben. Unser Angebot richten wir an Innenarchitekten und an alle, die gutes Design zu schätzen wissen und nach besonderen Lösungen suchen. Das Programm Creative Edition bietet Ihnen die Möglichkeit, einmalige, selbst definierte Oberflächen zu entwerfen. Es enthält speziell ausgewählte Stoffe von renommierten europäischen Herstellern wie Kvadrat oder Bute. Eine große Auswahl an Polsterstoffen in zahlreichen Farben und mit einer einzigartigen Bindung verleiht unseren Kollektionen einen neuen und einmaligen Charakter. Eine originelle Lösung bietet auch die Option zum Steppen von Leder und Stoffen, wodurch man bei den Möbeln eine effektvolle, dreidimensionale Optik erzielen kann.

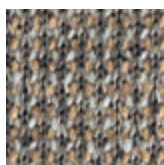
Max Knit		 CREATIVE EDITION
Hersteller	Kvadrat	
Zusammensetzung	37% Polyester, 63% Polyester FR	
Gewicht	389 g/m ²	
Zertifikate	<ul style="list-style-type: none"> - Scheuerfestigkeit - 60000 Martindale Scheuertouren (EN ISO 12947-2) - Peelingfestigkeit - 4-5 (EN ISO 12945-2) - Brandschutz - Zigarettentest (BS EN 1021-1) - Brandschutz - Streichholztest (BS EN 1021-2) - Brandschutz (BS 5852 0&1) - Brandschutz (DIN 4102:B1) - Brandschutz (ÖNORM B1/Q1) - Lichtechtheit - 5-7 (ISO 105-BO2) 	



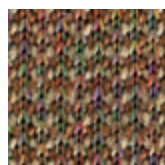
143



173



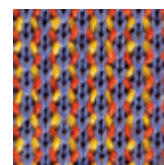
223



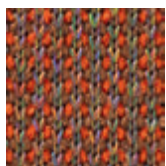
243



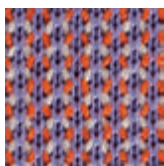
293



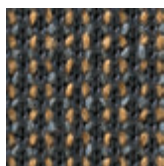
543



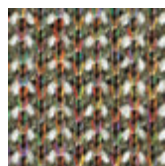
573




643

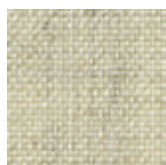


773

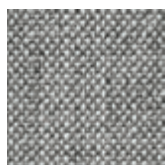


923

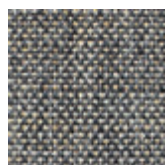
Remix 2		 CREATIVE EDITION
Hersteller	Kvadrat	
Zusammensetzung	90% Wolle, 10% Nylon	
Gewicht	300 g/m ²	
Zertifikate	<ul style="list-style-type: none"> - Scheuerfestigkeit - 100000 Martindale Scheuertouren (EN ISO 12947-2) - Peelingfestigkeit - 3-4 (EN ISO 12945-2) - Brandschutz - Zigarettentest (EN 1021-1) - Brandschutz - Streichholztest (EN 1021-2) - Brandschutz (BS 5852 0&1) - Brandschutz (ÖNORM B1/Q1) - Lichtechtheit - 5-7 (ISO 105-BO2) 	



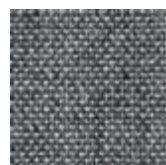
113



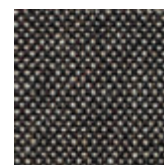
123



133



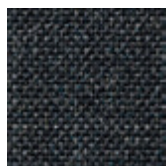
143



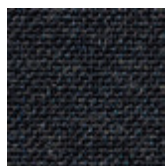
152



163



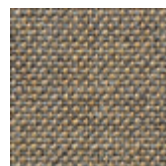
173



183



223



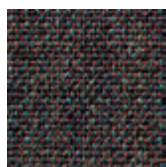
233



242



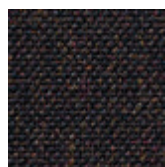
252



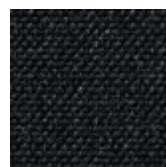
362



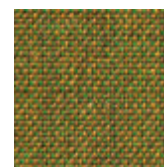
373



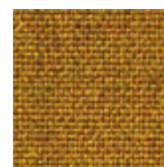
383



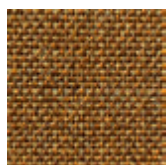
393



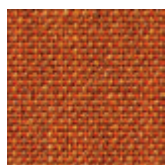
412



422



433



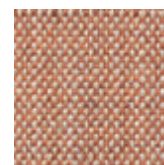
443



452



543



612

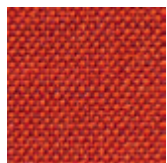


632

Die dargestellten Farben können aus drucktechnischen Gründen von den realen Farben abweichen.

Creative Edition

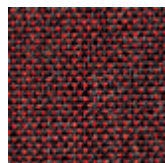
profim



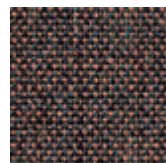
643



653



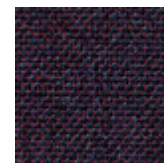
662



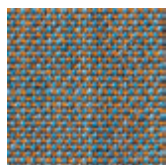
672



682



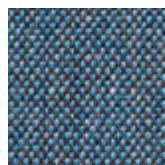
692



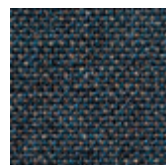
722



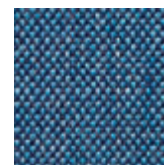
733



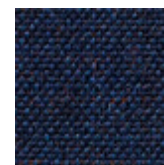
743



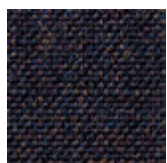
753



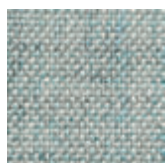
762



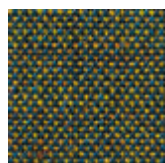
773



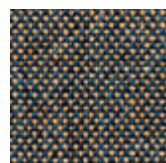
783



823



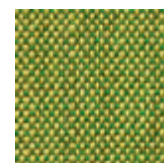
842



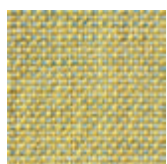
852



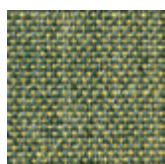
873



912



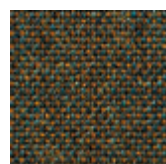
923



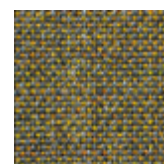
933



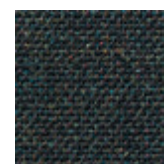
942



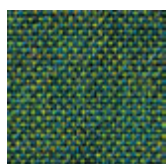
954



962




973



982

Die dargestellten Farben können aus drucktechnischen Gründen von den realen Farben abweichen.

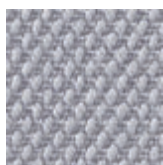
Steelcut 2		 CREATIVE EDITION
Hersteller	Kvadrat	
Zusammensetzung	90% Wolle, 10% Nylon	
Gewicht	589 g/m ²	
Zertifikate	<ul style="list-style-type: none"> - Scheuerfestigkeit - 80000 Martindale Scheuertouren (EN ISO 12947-2) - Peelingfestigkeit - 3-4 (EN ISO 12945-2) - Brandschutz - Zigarettentest (BS EN 1021-1) - Brandschutz - Streichholztest (BS EN 1021-2) - Brandschutz (BS 5852 0&1) - Brandschutz (DIN 4102:B2) - Brandschutz (ÖNORM B1/Q1) - Lichtechtheit - 5-7 (ISO 105-BO2) 	



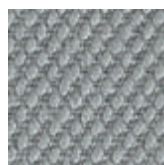
110



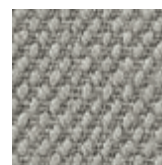
120



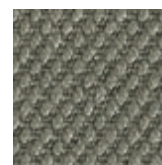
135



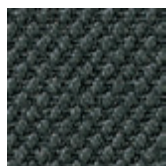
140



155



160



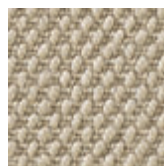
180



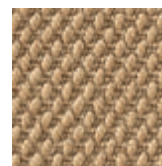
190



220



240



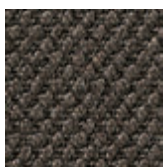
255



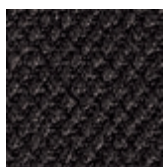
265



365



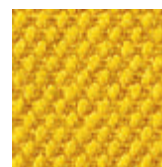
370



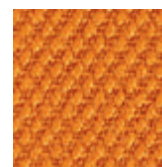
380



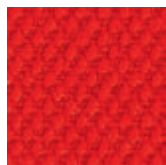
435



445



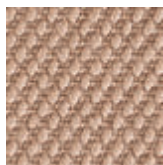
535



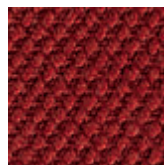
545



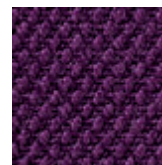
550



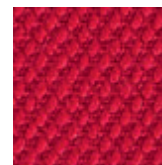
605



615



625



635

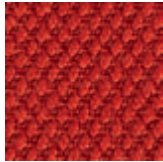
Die dargestellten Farben können aus drucktechnischen Gründen von den realen Farben abweichen.

Creative Edition

profim



655



660



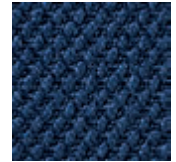
685



695



760



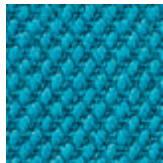
775



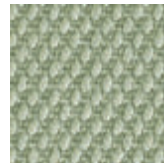
780



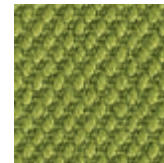
820



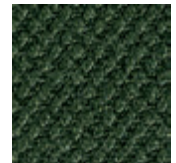
835



935



950



975



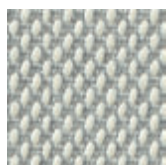
985

Die dargestellten Farben können aus drucktechnischen Gründen von den realen Farben abweichen.

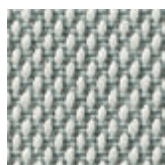
Steelcut Trio 2



Hersteller	Kvadrat
Zusammensetzung	90% Wolle, 10% Nylon
Gewicht	550 g/m ²
Zertifikate	<ul style="list-style-type: none"> - Scheuerfestigkeit - 100000 Martindale Scheuertouren (EN ISO 12947-2) - Peelingfestigkeit - 3-4 (EN ISO 12945-2) - Brandschutz - Zigarettestest (BS EN 1021-1) - Brandschutz - Streichholztest (BS EN 1021-2) - Brandschutz (BS 5852 0&1) - Brandschutz (DIN 4102:B2) - Brandschutz (ÖNORM B1/Q1) - Lichtechtheit - 5-7 (ISO 105-BO2)



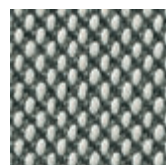
105



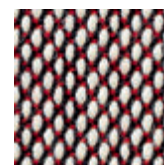
113



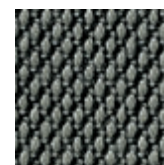
124



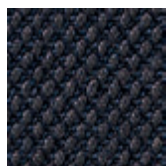
133



144



153



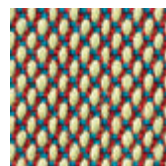
195



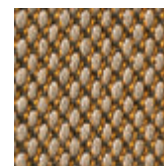
205



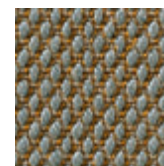
213



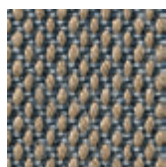
225



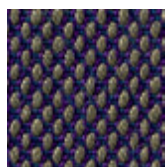
235



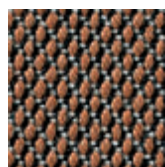
245



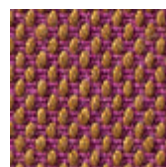
253



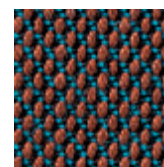
283



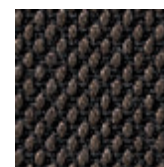
325



333



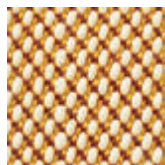
353



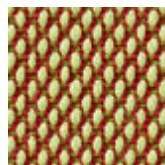
383



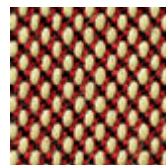
395



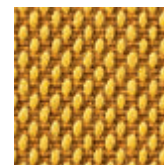
413



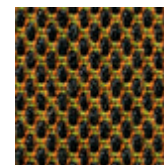
415



425

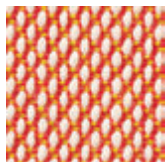


453

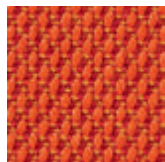


465

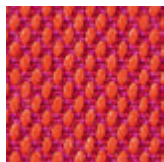
Die dargestellten Farben können aus drucktechnischen Gründen von den realen Farben abweichen.



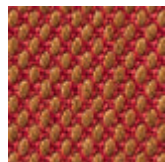
515



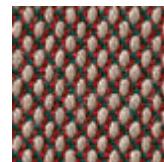
533



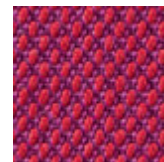
553



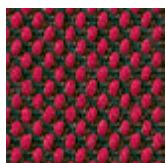
565



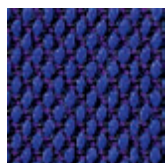
645



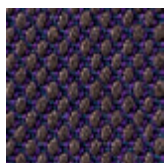
653



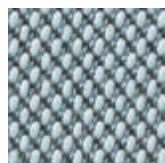
665



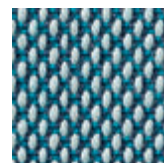
675



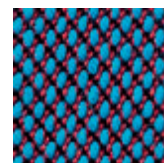
683



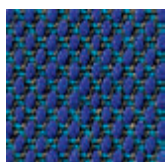
713



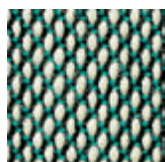
733



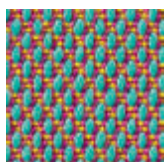
745



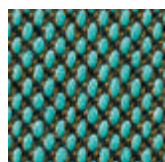
753



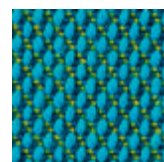
815



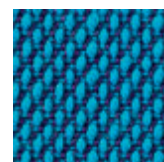
825



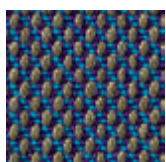
845



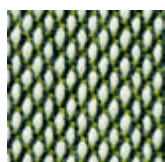
853



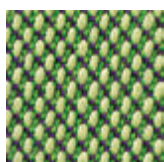
865



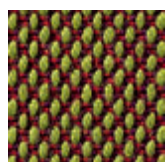
883



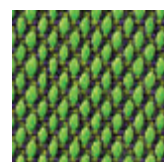
915



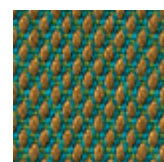
933



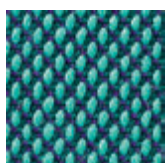
945



953



965

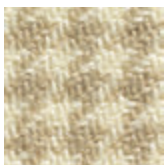


983

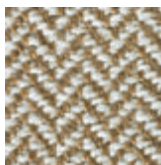
Troon (CF 752) / Turnberry (CF 751)



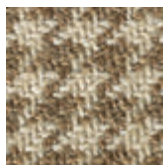
Hersteller	Bute
Zusammensetzung	92% Wolle, 8% Nylon
Gewicht	357 g/m ²
Zertifikate	<ul style="list-style-type: none"> - Troon - Scheuerfestigkeit - 60000 Martindale Scheuertouren (BS2543, BS EN 14465) - Turnberry - Scheuerfestigkeit - 80000 Martindale Scheuertouren (BS2543, BS EN 14465) - Peelingfestigkeit - 3 (EN ISO 12945-2) - Brandschutz - Zigarettentest (BS EN 1021-1) - Brandschutz - Streichholztest (BS EN 1021-2) - Brandschutz (BS 5852, Crib 5) - Lichtechtheit - 5 (BS ISO 105-BO2)



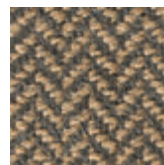
CF 752/0202



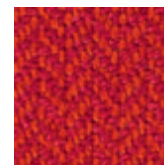
CF 751/0302



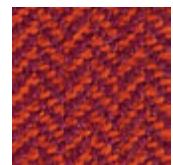
CF 752/3838



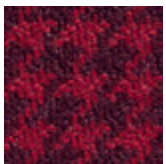
CF 751/1450



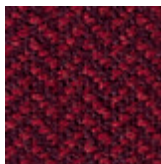
CF 751/3214



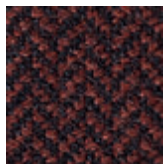
CF 751/3080



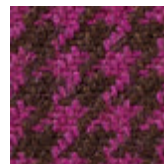
CF 752/3131



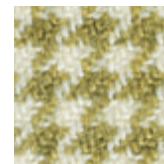
CF 751/0748



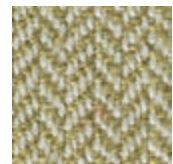
CF 751/0107



CF 752/2121



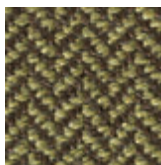
CF 752/1515



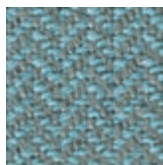
CF 751/1734



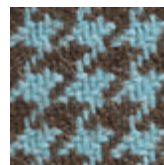
CF 752/2727



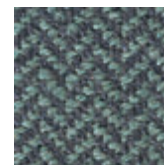
CF 751/1534



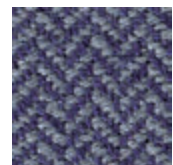
CF 751/2367



CF 752/2323



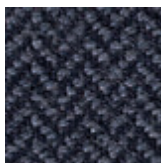
CF 751/1228



CF 751/1320



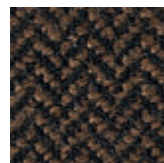
CF 752/0303



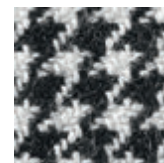
CF 751/0809



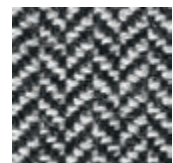
CF 752/0404



CF 751/0104



CF 752/0101



CF 751/0102

Die dargestellten Farben können aus drucktechnischen Gründen von den realen Farben abweichen.

KOLLEKTION	Stoffe				Steppung*	
	Max Knit (Kvadrat)	Remix 2 (Kvadrat)	Steelcut 2 Steelcut Trio 2 (Kvadrat)	Troon Turnberry (Bute)	Sitz vorne	Rücken vorne
Chefsessel / Drehstühle						
Action	-	●	●	-	●	●
Action 24/7	-	-	-	-	-	-
LightUp	-	●	●	-	●	-
Motto	-	●	●	-	●	●
MyTurn	-	●	●	-	●	●
One	-	-	-	-	-	-
Veris	-	●	●	-	●	●
Veris Net	-	●	●	-	●	-
Xenon	-	●	●	-	●	○
Xenon Net	-	●	●	-	●	-

*Die Steppung betrifft die Stoffe unserer Standardkollektion (ausser Eco) und der Creative Edition.

Legende:

- bei allen Modellen der Kollektion möglich
- nur bei ausgewählten Modellen der Kollektion möglich
- nicht möglich

KOLLEKTION	Stoffe				Steppung*			
	Max Knit (Kvadrat)	Remix 2 (Kvadrat)	Steelcut 2 Steelcut Trio 2 (Kvadrat)	Troon Turnberry (Bute)	Sitz vorne / Sitzpolsterauflage	Rücken vorne / Rückenpolster- auflage	Schale vorne	Schale hinten
Konferenzstühle								
Acos	-	●	●	-	●	●	-	-
Ariz	-	●	●	-	-	-	-	-
Bit	-	●	●	-	●	●	-	-
Kala	-	●	●	-	●	●	-	-
Komo	-	●	●	-	-	-	-	-
Ligo	-	●	●	-	●	●	●	-
Resso	-	●	●	-	●	●	●	-
Sensi	-	●	●	-	●	●	●	●

*Die Steppung betrifft die Stoffe unserer Standardkollektion (ausser Eco) und der Creative Edition.

Legende:

- bei allen Modellen der Kollektion möglich
- nur bei ausgewählten Modellen der Kollektion möglich
- nicht möglich

KOLLEKTION	Stoffe				Steppung*		
	Max Knit (Kvadrat)	Remix 2 (Kvadrat)	Steelcut 2 Steelcut Trio 2 (Kvadrat)	Troon Turnberry (Bute)	Sitzkissen	Innenseite	Aussenseite
Sofas, Sessel, Modulsysteme							
Fan	•	•	•	•	-	-	-
Hover	-	•	•	-	•	-	-
MyTurn Sofa	-	•	•	-	-	-	•
Nu	•	•	•	-	•	-	-
October	-	•	•	•	-	-	-
Pelikan	-	•	•	-	-	-	-
SoftBox	•	•	•	-	-	-	-
Sorriso	-	•	•	-	•	-	-
UpDown	-	•	•	-	-	-	-
Vancouver Box	-	•	•	-	-	-	•
Vancouver Lite	-	•	•	-	-	○	•
Vancouver Oto	-	•	•	-	-	-	•
Wall In	-	○	○	-	-	○	-
Wyspa	-	•	•	-	-	-	-

*Die Steppung betrifft die Stoffe unserer Standardkollektion (ausser Eco) und der Creative Edition.

Legende:

- bei allen Modellen der Kollektion möglich
- nur bei ausgewählten Modellen der Kollektion möglich
- nicht möglich

Creative Edition

profim

Varianten für die Steppung:
Action, LightUp, Motto, MyTurn, Veris,
Veris Net, Xenon, Xenon Net

Zusätzliche Informationen:
Q1 - Sitz vorne
Q2 - Rücken vorne



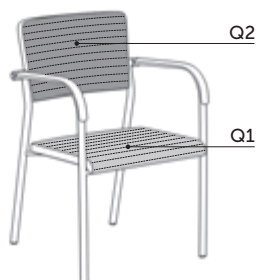
*Die Steppung betrifft die Stoffe unserer Standardkollektion (ausser Eco) und der Creative Edition.

Creative Edition

profim

Varianten für die Steppung:
Acos, Kala

Zusätzliche Informationen:
Q1 - Sitz vorne
Q2 - Rücken vorne



Varianten für die Steppung:
Bit, Ligo, Resso, Sensi

Zusätzliche Informationen:
Q1 - Sitzpolsterauflage
Q2 - Rückenpolsterauflage



Varianten für die Steppung:
Ligo, Resso, Sensi

Zusätzliche Informationen:
Q3 - Schale vorne
Q4 - Schale hinten



*Die Steppung betrifft die Stoffe unserer Standardkollektion (ausser Eco) und der Creative Edition.

Creative Edition

profim

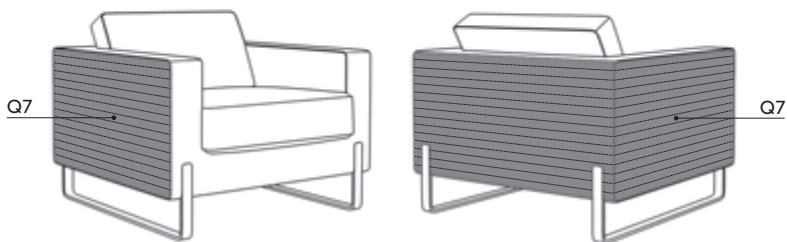
Varianten für die Steppung:
Hover, Nu, Sorriso

Zusätzliche Informationen:
Q5 - Sitzkissen



Varianten für die Steppung:
MyTurn Sofa

Zusätzliche Informationen:
Q7 - Aussenseite



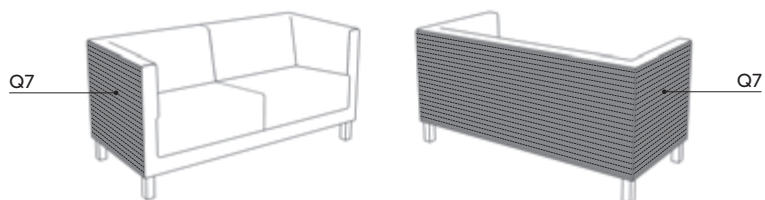
*Die Steppung betrifft die Stoffe unserer Standardkollektion (ausser Eco) und der Creative Edition.

Creative Edition

profim

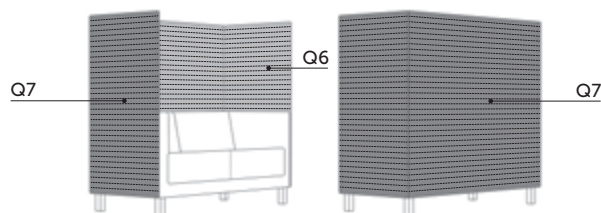
Varianten für die Steppung:
Vancouver Box, Vancouver Lite

Zusätzliche Informationen:
Q7 - Aussenseite



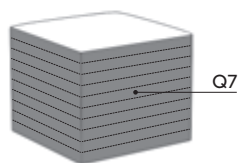
Varianten für die Steppung:
Vancouver Lite

Zusätzliche Informationen:
Q6 - Innenseite
Q7 - Aussenseite



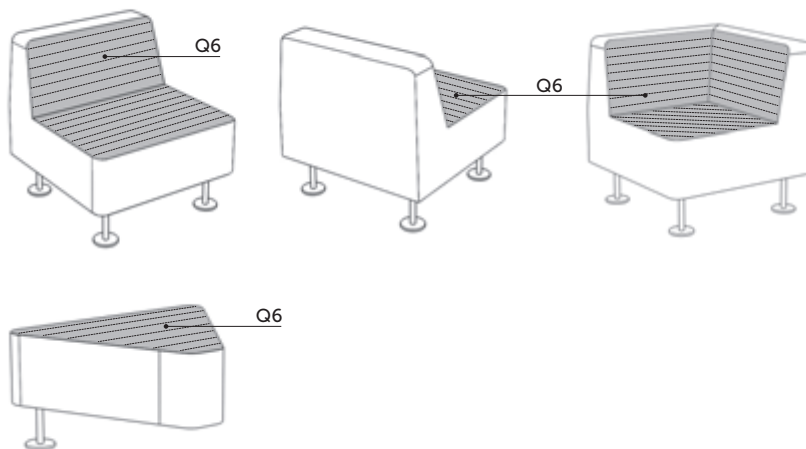
Varianten für die Steppung:
Vancouver Oto

Zusätzliche Informationen:
Q7 - Aussenseite



Varianten für die Steppung:
Wall In

Zusätzliche Informationen:
Q6 - Innenseite



*Die Steppung betrifft die Stoffe unserer Standardkollektion (ausser Eco) und der Creative Edition.

profim